

The great gifts we can give our children are the roots of responsibility and the wings of independence. Dr. Maria Montessori

BOARD NEWS AND INFORMATION

The following individuals comprise Elves’ 2023/2024 elected volunteer Board of Directors:

Heather Fonteyne, President (AP Parent)

Peter Jansen, Treasurer (CM)

Raewyn Edwards, Secretary (SP Parent)

Anna-May Choles, Director (CM)

Karen Ens, Director (CM)

Jason Fleury, Director (ECS Parent)

Maria Robin, Director (CM)

Jessica Troock, Director (SP Parent)

Natalie Viezel, Director (ECS Parent)

Kristin Ward Diaz, Director (ECS Parent)

Terry Wright, Director (AP Parent)

Barb Tymchak Olafson, Executive Director

(SP – School Program)
(AP – Adult Program)
(ECS – Early Childhood Services)
(CM – Community Member)

CONTENTS TABLE

Board News/Information	1
Executive Director Message	2
Principal Message	3
Family Support	3-4
Speech Department	5
FASD Respite Program	5-6
Nursing Notes	6-7
Adult Program	7
Program Directory	8
FirstView Tracking App Information	9-10
Solar Eclipse Letter	11
Therapy Page – Movement Songs for Kids	12

ACTIVE ELVES’ BOARD COMMITTEES

Advocacy Committee

Heather Fonteyne
Barb Tymchak Olafson

Bylaw/Policy Committee

Anna-May Choles, Jason Fleury, Terry Wright
Barb Tymchak Olafson

Location/Planning Committee

Gene Hochachka, Chris Idenouye, Terry Wright
Barb Tymchak Olafson

Fundraising Committee

Vivienne Bartee, Heather Fonteyne, Raewyn Edwards,
Kristin Ward Diaz, Gail Idenouye,
Anne-Marie Jackson, Chris Maksylewicz,
Jasmine Abu-Msameh, Teresa Vano
Barb Tymchak Olafson

Parent Advisory Council

Cathy Furtak (Adult Program Parent)
Lynn Gourley (Adult Program Parent)
Bill Gunter (Adult Program Parent)
Roxanna Hilcton (Adult Program Parent)
Barb Tymchak Olafson

BOARD MEETINGS

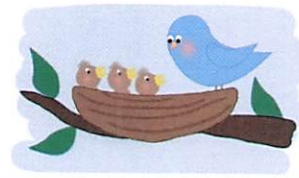
Elves’ Society holds **ten regular Board Meetings each year**, as well as our **Annual General Meeting each November**. Special meetings are held when matters arise requiring immediate attention.

Last Regular Board Meeting: February 28, 2024

Next Regular Board Meeting: March 20, 2024

Please visit Elves’ website at www.elves-society.org to see copies of these reports/legislation:

- Society Audited Financial Statement for the year ending August 31, 2023
- Elves’ School Program 2023 Assurance Framework



EXECUTIVE DIRECTOR'S MESSAGE

From Possibility to Ability

Hello to all of Elves' families, friends, and staff

We are approaching the warmer months of Spring, and are fortunate to have had so many warmer Winter days as well!

SCHOOL PROGRAM ENROLLMENT

Elves' School Program has had a very steady enrollment this year, with our current enrollment maintained at 282 ECS children and Grades 1-12 students. Our class lists for the 2024/2025 school year are quickly filling up.

We are receiving a great number of calls from families inquiring about enrollment for the 2024/2025 school year. If you are interested in, or know of anyone who is, please contact our Family Support office at 780.454.5310 for more information.

ADULT PROGRAM ENROLLMENT

There are currently 89 clients attending Elves' Adult Day Program.

FASD RESPITE PROGRAM ENROLLMENT

Elves' FASD Respite Program has 36 children attending our Saturday day program.

FUNDRAISING COMMITTEE

2024 Golf Tournament

Elves' 2024 Golf Tournament will be held on Thursday, May 30, 2024. We welcome you to support through business sponsorship, donations, or to join us as a golfer or as a non-golfer for the supper, or in a volunteer capacity.

The tournament will be held for the second year at The Ranch Golf and Country Club located at 9574 Pinchbeck Road in Acheson, Alberta. Tee time for the shotgun start will be at 2:00 pm. Check-in will begin at 1:15 pm.

Golfer fees are set at \$155 per golfer until April 15, 2024 for Early Bird applicants, increasing to \$175 per golfer after April 15, 2024. Deadline for registration is May 20, 2024.

<https://www.canadahelps.org/en/charities/elves-special-needs-society/events/elves-2024-golf-tournament/>

Elves appreciates all contributions toward this event. Funds raised will support infrastructure projects.

TO REGISTER OR DONATE, please visit [CanadaHelps](#).

50/50 EVENTS

Elves held our February Valentine's Day 50/50 event with congratulations going to winner, Jessica Hutton.

Another 50/50 event was held for St. Patrick's Day. Congratulations to winner, Anita Dingwall.

BYLAW/POLICY COMMITTEE

Elves' Bylaw/Policy Committee continues to meet on a regular basis to review and update existing policies. Most recently, this Committee has updated the Society's extensive Nursing Procedures policy.

TRANSPORTATION APP

Elves' transportation provider, First Student, is piloting a bus tracking and parent communications app called FirstView, for your smartphone or desktop. Please see letter to families toward the back of this Newsletter, from Elves' Transportation Coordinator, with instructions for parents about how to follow your child while they travel their bus route.

SOLAR ECLIPSE



On April 08, 2024, a solar eclipse will take place between 11:30 am and 1:50 pm. People who look at the sun may incur irreversible eye damage. To support eye safety of full-day program participants, outdoor events and community access will be cancelled. Buses will be canceled for a half day for PUF children as the eclipse is occurring during transitions. Parents and caregivers are welcome to drive their children on that day.

Barb Tymchak Olafson



PRINCIPAL

Elves has completed February Parent/Teacher meetings. The last set of Parent/Teacher meetings are scheduled to take place between May 27 and June 12, 2024.

The next Early Childhood Services (ECS) Demonstration of Learning will be held on March 22, 2024. Your classroom teachers will be in touch with families to invite you to attend.

DATES TO NOTE FOR 2024

ECS Demonstration of Learning:	March 22, 2024
FOP Supports for Autism:	March 22, 2024
Spring Break (NO SCHOOL):	Mar 25 to Mar 28, 2024
Good Friday:	March 29, 2024
Easter Monday:	April 01, 2024
Students Return:	April 02, 2024
ECS Demonstration of Learning:	April 19, 2024
IPP Writing Day (Gr 1-12 ONLY-NO SCHOOL)	May 16, 2024
Teachers' Day in Lieu (NO SCHOOL):	May 17, 2024
Victoria Day (NO SCHOOL):	May 20, 2024
Graduation Day (ECDC Kindergarten)	June 18, 2024
Graduation Day (EAYC Grades 1-12)	June 19, 2024
Graduation Day (EAYC Kindergarten)	June 19, 2024
Last Day for 800 Hr Kindergarten:	June 20, 2024
Last Day for 1000 Hr Grade 1-12:	June 26, 2024
Last Day for 400 Hr Early Childhood:	June 27, 2024
Last Day for Staff:	June 28, 2024

Year 1 and 2 (400 Hour) Students at Elves

Elves' Therapy Team are in the process of completing assessments between now and May 2024 to determine current skills and eligibility for continued programming. Families of children who are assessed and have progressed to the point of no longer qualifying for programming at Elves, will be assisted in finding mild/moderate or community programs for their children to attend. If your child qualifies to attend Elves for another year, you do not need to re-register with us. Please advise your classroom teacher or Family Support Worker if you do not wish your child to continue attending Elves' programming for the 2024/2025 school year. Thank you! *Kiera Meidinger*

ELVES' FAMILY SUPPORT WORKERS

SUMMER CAMP REGISTRATION

The days are getting longer, brighter & warmer- and that means, **it's time to register for summer camp!**



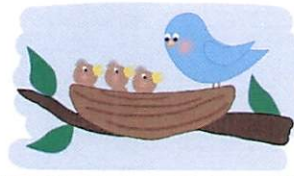
Invitations will be sent to some of Elves' families for Elves' Summer Program which serves families who may not have summer respite. There are a lot of other summer camp programs in the Edmonton area for kids with special needs (such as Adaptabilities or the Steadward Centre). Some are camps for all kids (such as City of Edmonton or St Albert recreation centres), and they may be able to accommodate your child. Some of these camps are for kids who have funding available through FSCD, and some are for parents who pay out of pocket. Please take a look and see which may be a good fit for your family!

City of Edmonton Recreation Activity Guide for individuals with disabilities:

<https://www.edmonton.ca/sites/default/files/public-files/assets/PDF/IndividualsWithDisabilitiesFALL.pdf>

Summer Camps:

- Adaptabilities – Hearts In Action: <https://adaptabilities.ca/our-services/summer-camps/>
- Centre For Autism: <https://centreforautism.ab.ca/summer-camp/>
- Camp Camp Health, Hope & Happiness (Camp He Ho Ha): <https://camphehoha.com/summer-camp/>
- Children's Autism Services of Edmonton: <https://childrensautism.ca/summer-camp-2024/>
Registration opens April 1, 2024
- Dynamyx Gymnastics : <https://www.dynamyxgymnastics.com/special-needs-camps.html>
- The Steadward Centre, at the U of A: <https://www.ualberta.ca/steadward-centre/media-library/tsc-summer-camps-2024-poster.pdf>



- AAC Camp at the U of A:
<https://www.ualberta.ca/communications-sciences-and-disorders/our-community/augmentative-and-alternative-communication.html>
Registration open already (until May 15)
 - Paralympic Sports Association:
<https://www.parasportsab.com/we-offer/one-all-kids-summer-camp-75/>
 - Growing Changes - Creating Confident Printers summer camp: <https://www.growingchanges.ca/what-we-offer>
 - St Albert Rec centre programs & camps:
<https://activity.stalbert.ca/COSA/public/category/browse/CAMP>
 - Bridge To Care specialized summer camp (must have an FSCD contract to be eligible):
<https://www.bridgetocare.org/>
- Easter Seals Camp Horizon: <https://easterseals.ab.ca/camp-programs-registration/#>

Recreation Programs, not specific to Summer:

- City of Edmonton Recreation Activity Guide for individuals with disabilities:
<https://www.edmonton.ca/sites/default/files/public-files/assets/PDF/IndividualsWithDisabilitiesFALL.pdf>
- SwimAbilities at U of A:
<https://www.activityreg.ualberta.ca/UOFA/public/category/browse/AQSWIMABILITIES>
- SwimAbilities at Trico Centre:
<https://tricocentre.ca/aquatics/swimabilities/>
- SwimAbilities at Move Learn Play
<https://movelearnplay.edmonton.ca/COE/public/category/browse/LSSABILIPROGX920>
- Social Skills group: <https://lledmonton.com/our-programs/>
- City of Edmonton – Adapted programs:
https://www.edmonton.ca/activities_parks_recreation/adapted-programs
- Special Olympics Edmonton:
<https://www.specialolympicsedmonton.ca/programs/>
- CP Alberta programs (For kids with physical and/or developmental disabilities, not just Cerebral Palsy):
<https://cpalberta.akaraisin.com/ui/2024cpaaedmonton-programs>

- We Rock the Spectrum:
<https://www.werockthespectrumedmonton.ca/>

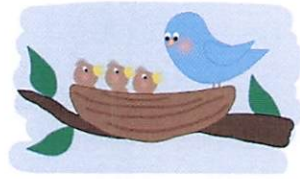
If you need any help with accessing inclusive recreational opportunities,



please feel free to reach out to the Family Support Worker team!

ELVES' FAMILY SUPPORT WORKERS	Hours and Centres
Stefanie Saltys, BSW, RSW Family Support Department 10825 – 142 Street NW Edmonton AB T5N 3Y7 Phone: 780.454.5310, ext 230 Cell Phone: 780.974.2581 Email: elvessw@elves-society.com	Stefanie is an Elves' Family Support Worker who works Tuesday to Friday with Elves' School Program and Saturdays at Elves' FASD Respite Program.
Angela Vardy, BSW, RSW Family Support Department 10419 – 159 Street EDMONTON AB T5N 3Y7 Phone: 780.481.5335 ext 212 Cell Phone: 780.920.2169 Email: sw4@elves-society.com	Angela is an Elves' Family Support Worker who works Monday, Wednesday and Friday throughout the school year at Elves Adult & Youth Centre.
Tracey Power Family Support Department 10825 – 142 Street EDMONTON AB T5N 3Y7 Phone: 780.454.5310, ext 236 Cell Phone: 780.920.8791 Email: elvessw@elves-society.com	Tracey is an Elves' Family Support Worker who works Tuesday to Friday with Elves' School Program and Saturdays at Elves' FASD Respite Program.





ELVES' SPEECH DEPARTMENT



Spring is coming! Spending more time outside is not only great for gross motor development, it is also an excellent opportunity to target language skills. When going to the park or going for a walk, there are so many things you can talk about! If your child uses AAC tools like a core vocabulary board, PODD, or an iPad,

bring it along to model language on (AAC = augmentative and alternative communication)! Here are some examples of language you can target:

- Vocabulary:
 - Names of animals
 - Slide, swing, monkey bars
 - Car, bus, truck
 - Tree, sun, cloud, grass
 - Park
- Verbs
 - Walk
 - Run
 - Slide
 - Jump
 - Throw
 - Go
 - Stop
- Descriptive words
 - Fast/slow
 - Big/small
 - A LONG slide
 - A LITTLE ladybug
 - The SOFT sand
- Understanding of prepositions
 - In/out
 - Up/down
 - ON the swings
 - BESIDE the trees
 - UNDER the table



- Categories
 - Look for animals
 - Look for plants
 - Talk about the weather
 - Talk about the clothes you need for outside

Remember: Follow your child's lead and talk about what is interesting to them. Use short simple sentences when



talking with your child to ensure they are understanding, and *repeat repeat repeat* the language target you choose to focus on!

For more information, please contact Elves' speech team at 780.454.5310 (ECDC) or 780.481.5335 (EAYC).

ELVES THERAPY DEPARTMENT

Please see "[Movement Songs for Kids](#)" on final page of Newsletter!

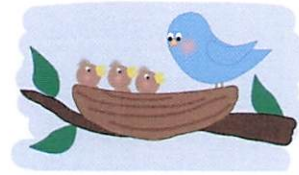
ELVES' FASD RESPITE PROGRAM



The children at Elves' FASD Respite Program have enjoyed a wide range of activities such as Smart Board, gym activities, indoor soccer, board games, creative art activities, crafts, and outdoor activities when the weather permits us to be outside.

We have recently welcomed visitors such as Edmonton Public Library, and Kompany Family Theatre.





Pilot Project

Elves’ FASD Respite Program has expanded services for a Pilot Project, with temporary funding, to serve children ages 9 to 12 (January to June 2024). Four children are receiving services under the Health Outcomes Grant.

Upcoming Important Dates

March 23, 2024: NO RESPITE PROGRAM

March 30, 2024: NO RESPITE PROGRAM

April 19, 2024: Parent and Child Engagement Sessions (PACES) Setting up a Successful Summer (a virtual PACES session)

Respite Program 2024/2025

If you are interested in Elves’ FASD Respite Program for the 2024/2025 school year, please contact us by email:

Raelee: respite@elves-society.com

Tracey: elvessw@elves-society.com

Please note we have a limited number of spaces available. Priority is established by individual needs of families. We will be conducting family meetings between March and May and families will be contact to confirm in July and August 2024.

ABSENCES

If your child is going to be absent from the Saturday Respite Program, please call or text Raelee at 780.920.5342 or email to respite@elves-society.com

Happy
Easter



NURSING DEPARTMENT

ELVES’ NURSING STAFF

Elves Child Development Centre

Diane McCook (LPN)

Elves Adult & Youth Centre

Rhea Arguelles (LPN – Youth Program)

Leila Dela Cruz (LPN – Youth Program)

Brenda Swanson (RN – Adult Program)

Greetings families and caregivers from Elves’ Nursing staff!

Spring is coming! We are sure everyone is looking forward to the warmer weather and spring flowers.

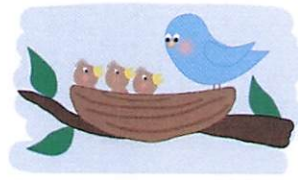
With Spring just around the corner, here comes a mixture of warm and cold weather, melting snow, and puddles of water.

Many of our students and clients are unable to express to us when their environment is too warm or cold. Dressing your child in layered clothing is beneficial for cold mornings and warmer afternoons. Waterproof jackets, rubber boots,



hats, mitts, and slush pants are good for cool weather and when playing in slushy snow or puddles. It is important to change wet clothing when children come inside

from playing. Wet clothing left on for too long can contribute to hypothermia or the development of a cold. All children should be supervised when playing outside. Ice may form beneath the surface of puddles, on sidewalks or play areas. This can contribute to unexpected falls. Caregivers should also be conscientious of deep puddles, sticky mud and on the lookout for all hazards.



MyHealth.Alberta.ca is a site that was built by the Alberta Government and Alberta Health Services to give Albertans one place to go for **health information they can trust**. Healthcare experts all across the province ensure that the information is correct, up-to-date, and written for people who live in Alberta.

MyHealth.Alberta.ca is home to valuable, easy-to-understand health information and tools made for Albertans, including information about:

- health conditions
- healthy living
- medications
- tests and treatments

There are also:

- educational videos
- symptom checkers
- emergency phone numbers
- a health care locator (e.g., a family doctor near you)

MyHealth.Alberta.ca is always growing. Find out [what's new](#) on the website. Have questions? The [frequently asked questions](#) page can help. MyHealth.Alberta.ca cannot answer questions about symptoms by email. For health advice and information, call [Health Link Alberta](#) at 408-LINK 24 hours a day, 7 days a week.

Have a wonderful, safe Spring Break, and a Happy Easter!

From Elves Nursing Staff:
Diane, Brenda, Rhea, and Leila

ADULT PROGRAM NEWS

Although the current temperatures are deceiving us, Elves' Adult Program is getting ready to embrace the Spring and its blooming gifts.



St. Patrick's Day was filled with green shamrocks, mixed with the first Easter-themed decorations.

This season brings so many exciting activities, including planning for our Serenity Garden, organizing outings to the Children's Festival, and preparing a big event for some of our program participants who are celebrating their 25th year with Elves' Adult Program.

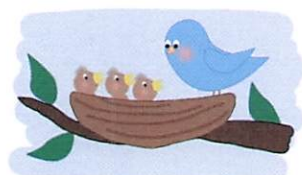


We are also working on client goals for the upcoming new Individual Support Plan (ISP) cycle. This process involves engaging instructors and clients in brainstorming activities and will culminate in meetings with parents, guardians, groups homes, and Persons with Developmental Disabilities (PDD) caseworkers.

We are looking forward to meeting our families and guardians in the next few months.

Laura Bellacicco





PROGRAM DIRECTORY

ELVES CHILD DEVELOPMENT CENTRE (10825 - 142 Street).....780.454.5310

Kiera Meidinger, Principal (M-F).....ext. 204

Kayla Wolford, Special Education Supports & Learning Coach (M-F).....ext. 205

Ashley Lumme-Levesque, PUF Coordinator (in charge of transportation) (M-F).....ext. 232

Stefanie Saltys, Family Support Worker (M-F)..... ext 236

Tracey Power, Family Support Worker (Tues-Sat).....ext. 236

Lonneke de Groot, Speech Language Pathologist (M-F)ext. 228

Vacancy, Speech Language Pathologist (M-F).....ext. 228

Saly Habashy, Occupational Therapist (M-F)..... ext. 210

Wilna Boshoff, Physical Therapist (Thur).....ext. 210

Holly Thompson, Physical Therapist (Tues).....ext. 210

Tara Vanstone, OT/PT Assistant (M-F).....ext. 224

Rachel Grenis, SLP Assistant (Tu/Th).....ext. 210

Nicole Latus, SLP Assistant (M-F).....ext. 210

Maghan Aldous, SLP Assistant (M-F) ext 210

Tasha Arbuckle, SLP Assistant (M-F).....ext. 210

ELVES FASD RESPITE PROGRAM (10825 - 142 Street).....780.454.5310, ext. 233

Raelee Grier, FASD Respite Program & FOP Coordinator (Tues-Sat).....780.920.5342

ELVES ADULT & YOUTH CENTRE (10421 - 159 Street).....780.481.5335

Laura Bellacicco, Adult Program Manager (M-F)..... ext. 201

Shauna Williamson, Adult Program Staff Training/Volunteer Coordinator (M-F).....ext. 239

Connie Daynes, Adult Program Activities Coordinator/Behavioural Consultant.....ext. 202

Angela Vardy, Family Support Worker for School Program (M/W/F).....ext. 212

Sarah Peterson, Occupational Therapist, School Program (Tu/W/Th).....ext. 219

Wilna Boshoff, Physical Therapist for School Program (Tu/W/Th).....ext. 211

Holly Thompson, Physical Therapist for School Program (Tu/W/Th).....ext. 211

Tiffanie Levesque-McLeod, Physical Therapist for School Program (M/W/Th/F).....ext. 211

Erin Kaminsky, OT/PT Assistant for School Program (M-F).....ext. 254

Jillian Ackroyd-Conley, OT/PT Assistant for School Program (M-F).....ext. 211

Tara McPhedran, Speech Language Pathologist for School Program (M-F).....ext. 209

Elves Nursing Staff:

Diane McCook, LPN for ECS Program @ ECDC780. 454.5310, ext. 206

Brenda Swanson, Lead RN, Adult Program.....780.481.5335, ext. 208

Rhea Arguelles, School Program LPN @ EAYC.....780.481.5335, ext. 220

Leila Dela Cruz, Youth Program LPN @ EAYC 780.481.5335, ext 220



ELVES SPECIAL NEEDS SOCIETY
Administrative Offices
10825-142 Street
Edmonton, AB T5N 3Y7
Phone: 780.454.5310
Fax: 780.454.5889
Email: info@elves-society.com
Web: www.elves-society.com
Business No: 118898360RR0001

Spring 2024

Dear School Program Families

In continued partnership with our transportation provider, First Student, Elves Special Needs Society is piloting FirstView, a bus tracking and parent communications app for your smartphone or desktop.

FirstView offers live tracking of the bus, and you can set the app to provide notifications of when the bus has entered a location of your choosing. You can receive notifications on your phone, or via email (up to 3 email addresses can be added). All buses your child(ren) use can be tracked via just one app – just provide individual colours for each child!

Please note that the app or website is able to track the bus but does not track your child. As the app/website tracks the bus, if your child is no longer on that bus (for either one day, or long-term), you would need to begin to track the specific route/bus taking your child that day. To sign up for the app/website, you will need to provide a name (can be a parent name, or a nickname), email address, and province (Alberta). This information is stored in the United States, and is stored with FirstView. No child-specific data or information is stored. To learn more or to receive a copy of First Student Privacy Policy, contact First Student at www.firststudentinc.com/contact.

This is the first time that this service is available to Elves' School Program community. Please understand that this is new to the entire team at Elves, as well as the entire team at First Student. The bus driver, dispatch, and staff at both the bus company and Elves' School Program, are learning right along with you, so we appreciate your patience and grace as we navigate learning this system together!

All busses should now be able to be tracked. If you are experiencing challenges tracking your child's bus, please connect with FirstView support via the app or website, or contact First Student at **825.410.5958**, and they will assist if possible. We are working hard to ensure that every student and family has a great experience with this!

Please see page 2 for information including how to register, and how to track the bus.

Sincerely,

Ashley Lumme-Lévesque
Transportation Liaison

Elves Child Development Centre
10825-142 Street
Edmonton AB T5N 3Y7
Phone: 780.454.5310
Fax: 780.454.5889
Email: info@elves-society.com

Elves Adult & Youth Centre
10421-159 Street
Edmonton AB T5P 3A6
Phone: 780.481.5335
Fax: 780.483.5316
Email: adultprogram@elves-society.com

How to use:**1. Download the FirstView ParentView App**

Go to web.firstviewapp.com or find FirstView in the App Store or Google Play. Follow the instructions to download the app to your smartphone and create an account.

Website version can be found here - <https://web.firstviewapp.com/login>

2. Set Up Your Profile

Open the ParentView app from your home screen and begin the registration process. You'll be asked to provide the following information:

- a) Select State/Province: Alberta
- b) Select District: Elves Special Needs Society
- c) District Code: QTKV

You'll then be prompted to register.

3. Follow a Route

Once you have confirmed your account, login and select **Profile** to "**Add A Student**" with the information you received from your school district. Next, you will select AM/MID/PM Route, search for your route name and select your school (if applicable).

Your child's route to school:

Your child's route home:

4. Setup Distance Alerts

To set up alerts for tracking the bus, you will be prompted to "**Configure Notification**". Select the location you want to track the bus to, choose a geofence size around your location, and set your time range. When the bus enters your geofence within the time range selected, you will receive a notification that the bus is near. Students should still be at their assigned bus stop at least 10 minutes prior to the scheduled arrival time.

5. Receive Notifications

Go to **Settings** and select "**Notification Recipients**" to add email notifications for up to 3 recipients, including yourself. From this screen, you can also edit your **Profile** or follow another route. Alerts and notifications from your district or the bus depot will appear under **Notifications** in the menu.

**To receive push notifications, you must allow your mobile device to receive notifications from the FirstView app. You will be prompted upon downloading the app or you can confirm/update your settings within your phone's app settings.*

March 18, 2024

Dear Parents, Caregivers, and Staff

There will a solar eclipse event that will be taking place on Monday, April 08, 2024 between 11:30 am and 1:50 pm.

The Canadian Association of Optometrists has provided guidance that "Looking at the Sun directly during an eclipse can lead to solar retinopathy, permanently damaging the retina's light-sensitive cells. Even a brief look at the partly-eclipsed Sun can result in harm to the eyes without associated pain." Therefore, there would not be an indication to staff or families whether damage is occurring until an eye exam detects irreversible damage.

Elves will suspend services for the first and second-year learners who would be travelling in buses or exposed to the outdoors while transitioning to and from their buses to the building during the solar eclipse. We will remain operational for families who wish to drop their children off and will undertake responsibility for time in vehicles or outdoors on that day.

Elves will continue regular support for Kindergarten, Grades One to 12 learners, and Adult Program clients. Program Managers have been asked to ensure that community access, outdoor walks/play are not scheduled and that indoor activities are planned accordingly. Arrival and departure times would not be modified for full-day program participants.

Best regards

ELVES SPECIAL NEEDS SOCIETY

Barb Tymchak Olafson

Barb Tymchak Olafson
Executive Director
780.454.5310

MOVEMENT SONGS FOR KIDS

Songs are a fun way to incorporate movement.
Here are some songs to get you started!

1. "Head, Shoulders, Knees, and Toes"
2. "The Hokey Pokey"
3. "The Bean Bag Bop"
4. "Stand Up, Sit Down"
5. "The Jump Song"
6. "The Funky Monkey Dance"
7. "Let's Go Swimming"
8. "Shake and Move"
9. "Shake Your Sillies Out"
10. "Animal Alphabet Move and Groove"

These songs are not only encourage movement, but they also encourage coordination, gross motor skills development, and are fun!